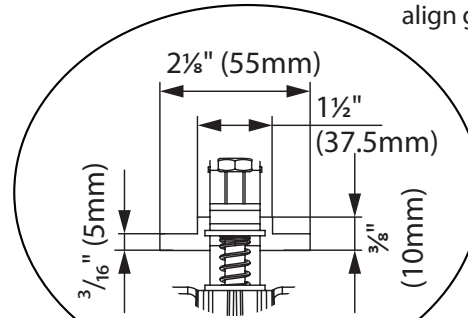
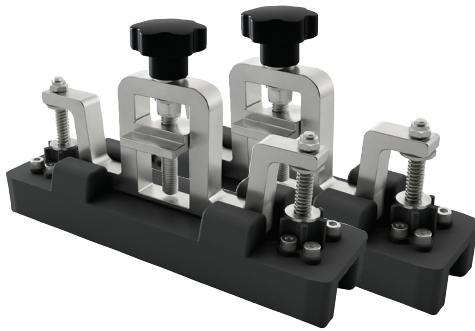
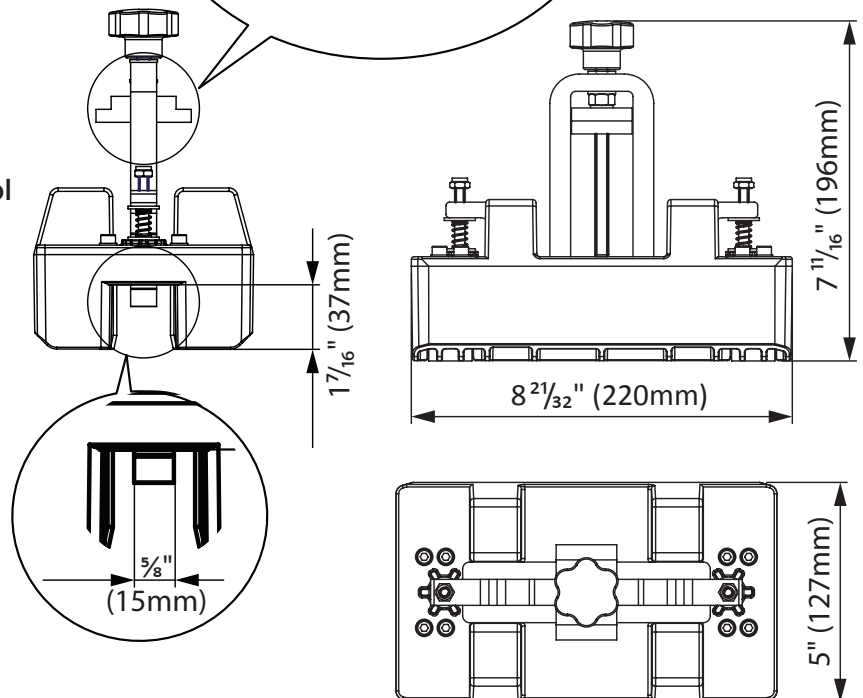
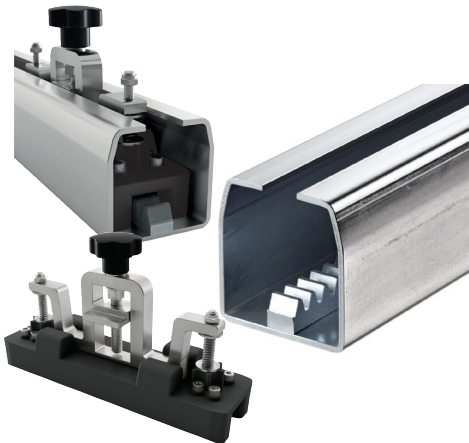


# CG-55G

Gear rack centering device  
Set of 2 pieces  
Installation tool to center and align gear rack in track



## The Integrator Gear Rack Installation Tool



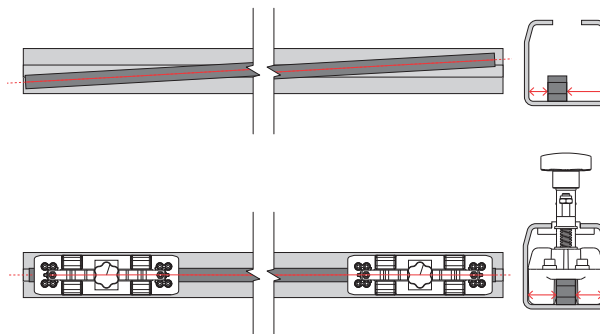
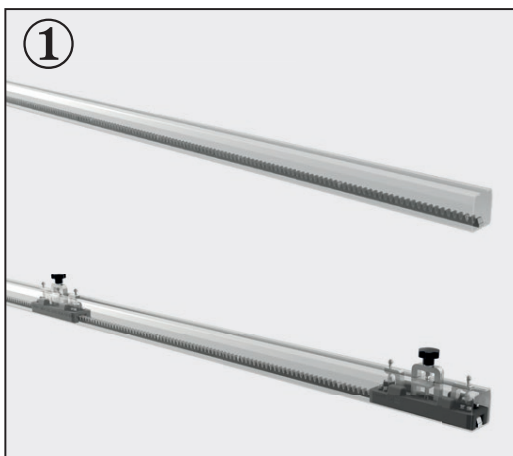
The integrator installation tool is a centering and alignment guide. It quickly and simply centers the gear rack along its length by sliding into position inside the track. The central slot in the guide base holds the gear rack centered in the track. The screw adjustment locks the tool in position so that the pre-drilled holes on the gear rack can be used as a template for drilling into the track. When a second piece of gear rack is required, just position the guide between the two gear racks and tighten the locking screw. This will perfectly align the teeth between the two gear racks.

USE: Rack fixing template kit.  
FIXING: Fasten the template inside the monorail to align and secure the rack.  
RECYCLING: Disposal as ferrous material in accordance with the current laws in the country of installation.  
IMPORTANT: The manufacturer reserves the right to modify the characteristics of the product as required without notice. The manufacturer declines any liability for even partial modifications to the product, and the declared performance values are valid only if the installation procedures are carried out by qualified personnel.  
MAINTENANCE FREQUENCY: This article does not require any type of maintenance. Check its functionality and replace the product if necessary.

TECHNICAL CHARACTERISTICS	
CG-55G	
WEIGHT OF PART	4,2 Kg
MATERIAL	Steel - Plastic
CG-50G	
CGS-345G	

**Illustrations not to scale and are for reference only. Imperial units shown are for reference only, use millimeters for most accurate sizes.**

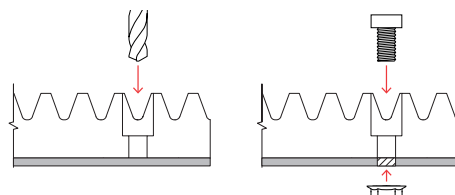
All pictures, technical drawings and related specifications belong to Fratelli Comunello Spa and they are defended by rules of copyright.  
All uses not expressly authorized will be legally prosecuted. Product specifications are subject to change without notice.



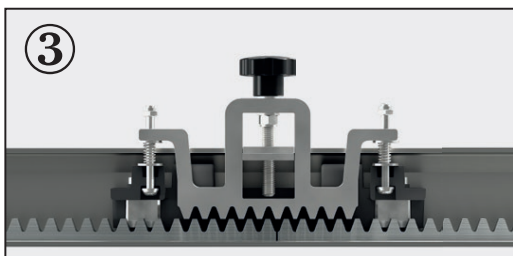
Position the first piece of gear rack inside the track. Use two template guides, one positioned at each end of the gear rack to center the gear rack lengthways within the track.



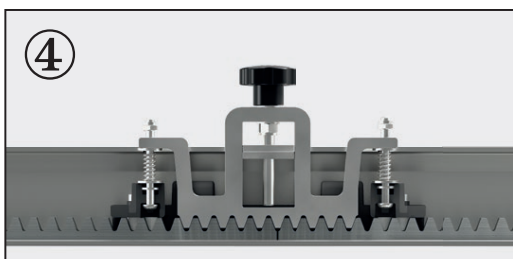
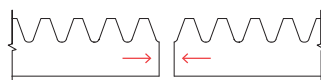
Using the pre-drilled gear rack as a guide, drill mounting holes in the track. Screw the gear rack to the track.



Drill Bit Sizes:	
CG-50M	5.2mm
CG-50P	6.2mm
CG-50G	10.2mm



Insert the second piece of gear rack.



Position the template guide between two pieces of gear rack and tighten the locking screw. The gear rack teeth are registered and spaced correctly as the guide is tightened into place. After locking the second guide at the far end of the gear rack, use the pre-drilled gear rack as a guide to continue drilling mounting holes in the track.