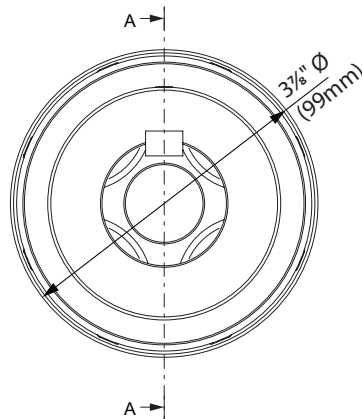
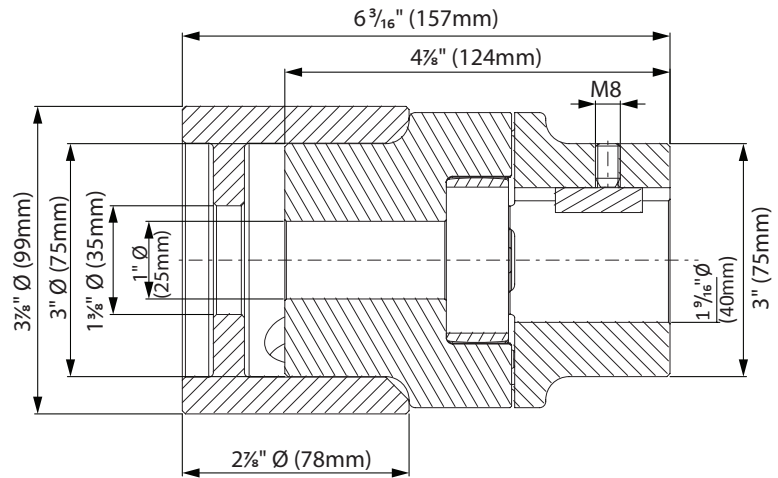


# CG-58G

Drive Shaft Coupling  
for use with CGS-500.8  
Integrator Carriage



USE: Adapter for connecting Integrator carriages with motor.

TYPE: Adapter for Grande Integrator carriages.

Material: galvanized steel.

RECYCLING: Dispose of the bushes, screws and latches as ferrous material according to the laws of the installation's country.

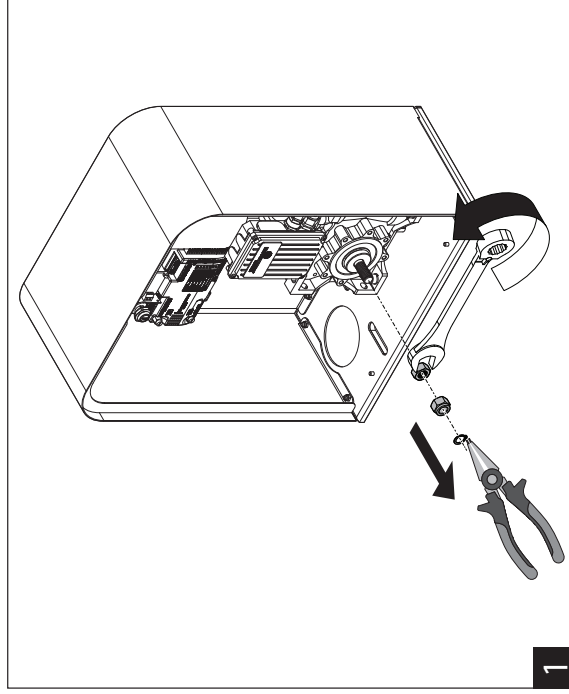
Wear parts: latches.

WARNINGS: The manufacturer reserves the right to change the characteristics of the product according to his needs without prior notice. The manufacturer is not liable for even partial modifications of the product and the declared performances are valid only if the installation methods indicated in the instructions and performed by qualified personnel are followed.

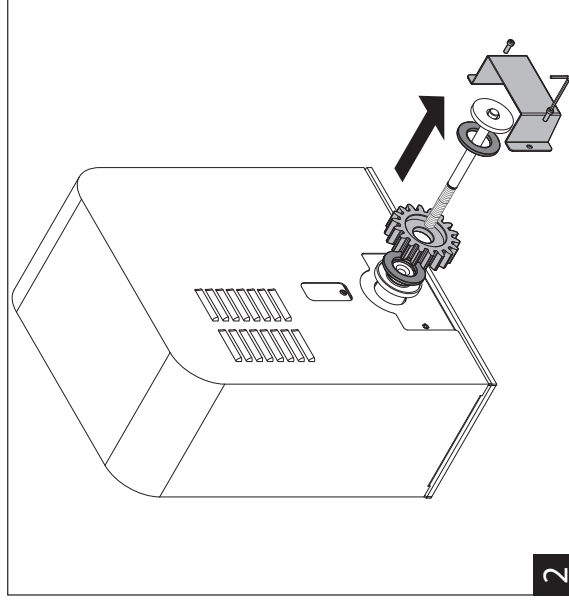
TECHNICAL CHARACTERISTICS				
WEIGHT OF PART			5,787 Kg	
CAPACITY (maximum force on the carriage axis)			F1 max 4000 Kgf	
MAINTENANCE FREQUENCY				
PRIVATE HOME	BUSINESS	WAREHOUSE	CONDOMINIUM <20 UNITS	CONDOMINIUM > 20 UNITS
2 YEAR*	2 YEAR *	1 YEAR *	6 MONTHS*	6 MONTHS *
COMBINED CARRIAGES			CGS 500.8 G	
Check the functionality and integrity of carriages.				
Clean lower area of contact between wheels and rail				
Make sure the carriages are integral with the concrete base				
Grease the gears with the appropriate grease				
Check gears and racks wear				
Check fastening of the locking screws of the rack to the monorail				
*The scheme refers to a normal workplace (not marine or particularly aggressive environments).				

**Illustrations not to scale and are for reference only. Imperial units shown are for reference only, use millimeters for most accurate sizes.**

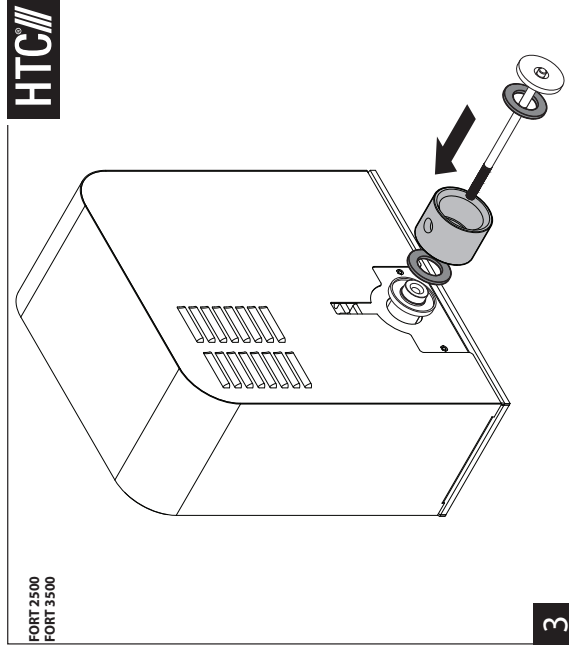
All pictures, technical drawings and related specifications belong to Fratelli Comunello Spa and they are defended by rules of copyright.  
All uses not expressly authorized will be legally prosecuted. Product specifications are subject to change without notice.



1



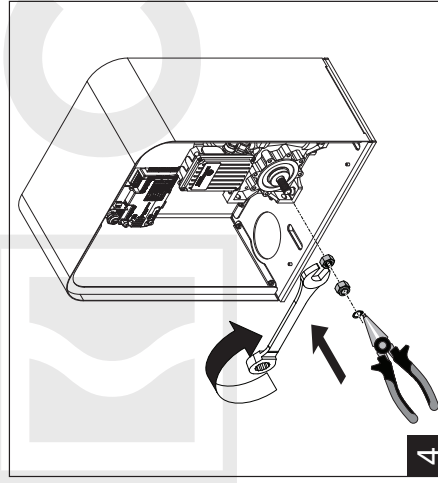
2



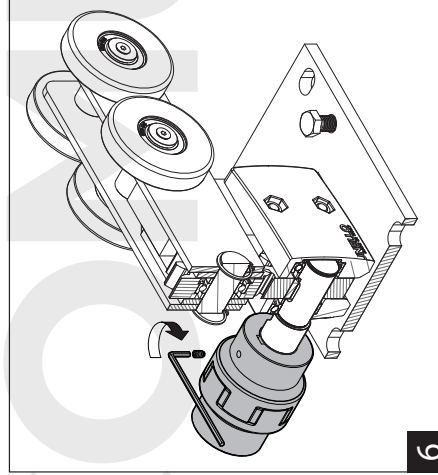
3

HTC

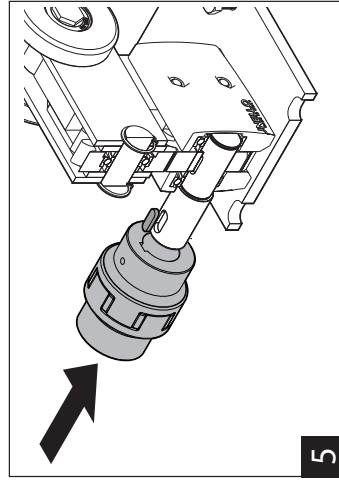
FORT 2500  
FORT 3500



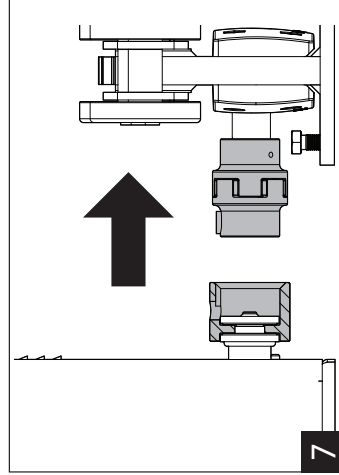
4



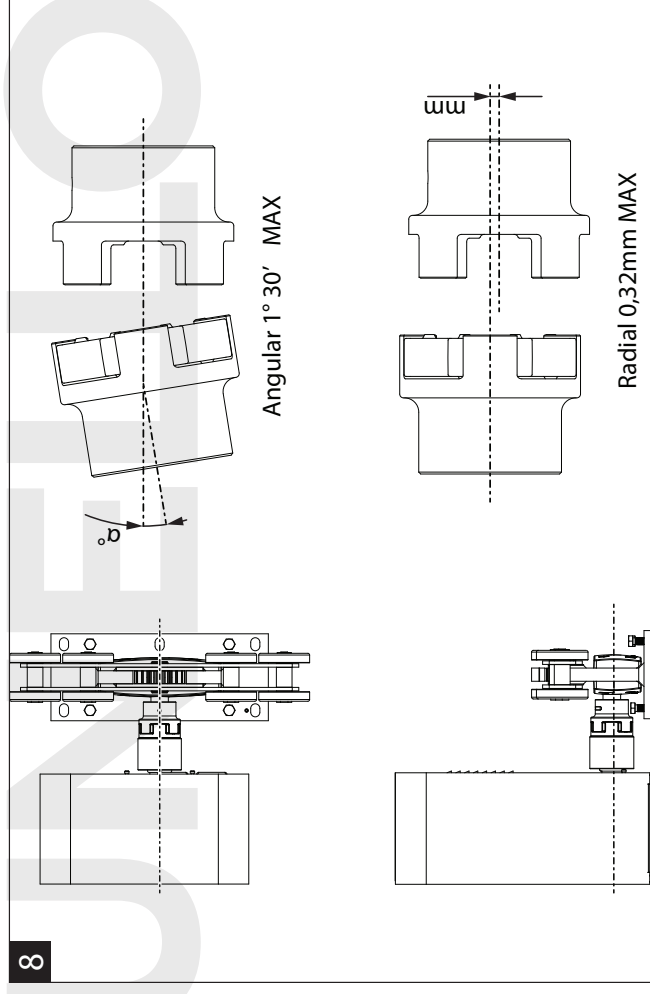
6



5



7



8

Angular 1° 30' MAX

Radial 0,32mm MAX

Per automatizzare il sistema Integrator Grande con attuatori Comunello (Fort 2500/3500) vedere l'articolo "Frecorsa elettromeccanica" AC-207 nella divisione Comunello Automation.  
Su richiesta disponibili adattatori per qualsiasi marca di attuatore.

To automate the Grande Integrator system with Comunello actuators (Fort 2500/3500) see item "Electromechanical limit switch" AC-207 in the Comunello Automation division.  
On demand available adapters for any brand of actuator.

