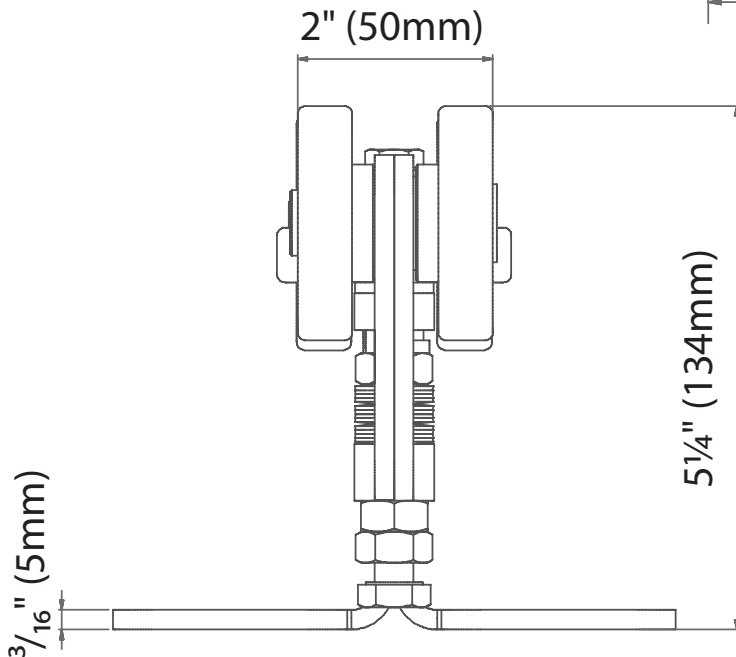
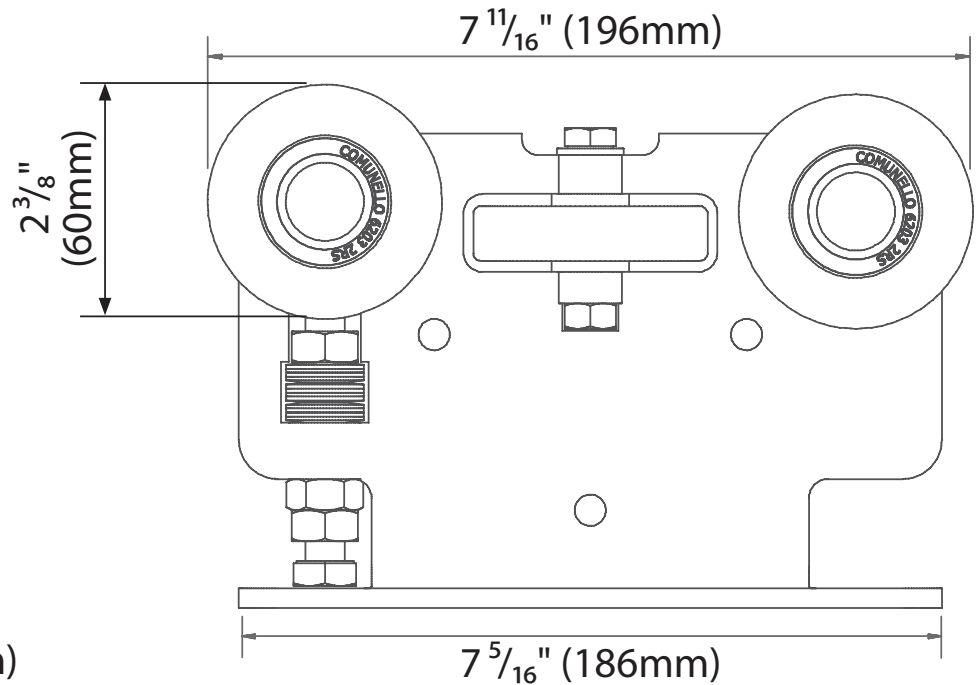
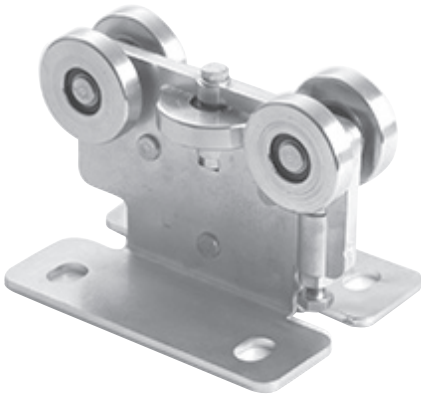


CGS-150.5M

Mini Carriage, Monobloc Body
Used in the CGS-KIT150



USE: Carriage for cantilever gates

TYPE: Carriage with 5 wheels, base and monobloc body with springs

FIXING: Use 4 anchor bolts CG-348M16 or suitable plugs (both not supplied). For the dimensions of the concrete base, see the enclosed table.

MATERIAL: Electrogalvanised steel.

RECYCLING: Disposal as ferrous material in accordance with the current laws in the country of installation.

PARTS SUBJECT TO WEAR: Bearings and wheels.

IMPORTANT: The manufacturer reserves the right to modify the characteristics of the product as required without notice. The manufacturer declines any liability for even partial modifications to the product, and the declared performance values are valid only if the installation procedures are carried out by qualified personnel.

TECHNICAL CHARACTERISTICS				
		CGS-150.5M		
WEIGHT OF PART		3,9 Kg		
LOAD-BEARING CAPACITY (Max. weight on axis)		700 Kgf		
MAINTENANCE FREQUENCY				
PRIVATE HOME	BUSINESS	WAREHOUSE	CONDOMINIUM <20 UNITS	CONDOMINIUM > 20 UNITS
2 YEAR*	2 YEAR *	1 YEAR *	6 MONTHS*	6 MONTHS *
Check the functionality and integrity of carriages.				
Clean lower area of contact between wheels and rail				
Make sure the carriages are integral with the concrete base				
*The scheme refers to a normal workplace (not marine or particularly aggressive environments).				

CGS-150.5M - 5 wheel carriage, monobloc body with springs (used in the CGS-KIT150)

HEIGHT		BASE PLATE LENGTH		BASE PLATE WIDTH		AIR GAP (Grade to Bottom of Track)		FULL HEIGHT (Grade to Top of Track)		BOLT HOLE SIZE		BOLT HOLE SPACING (L) (Center-to-Center)		BOLT HOLE SPACING (W) (Center-to-Center)		CARRIAGE PLATE THICKNESS	
Inch	mm	Inch	mm	Inch	mm	Inch	mm	Inch	mm	Inch	mm	Inch	mm	Inch	mm	Inch	mm
5 1/4	134	7 5/16	186	5 15/16	150	2 1/2	67	5 5/16	135	1 5/16 x 5/8	24x17	4 15/16	126	3 15/16	100	3/16	5

Illustrations not to scale and are for reference only. Imperial units shown are for reference only, use millimeters for most accurate sizes.

All pictures, technical drawings and related specifications belong to Fratelli Comunello Spa and they are defended by rules of copyright.

All uses not expressly authorized will be legally prosecuted. Product specifications are subject to change without notice.

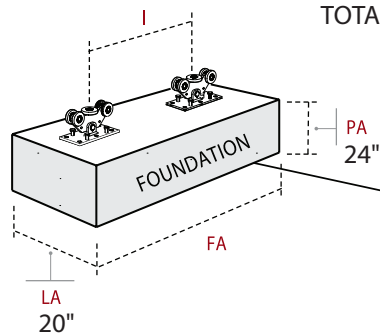
FOUNDATION

LENGTH (LA)

WIDTH (FA)

DEPTH (PA)

INTERAXIS (I)

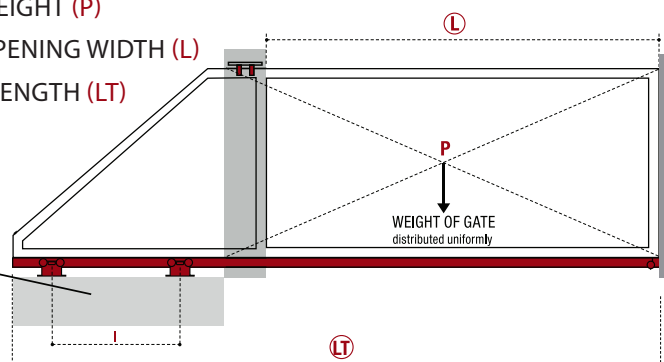


MEASUREMENTS

GATE WEIGHT (P)

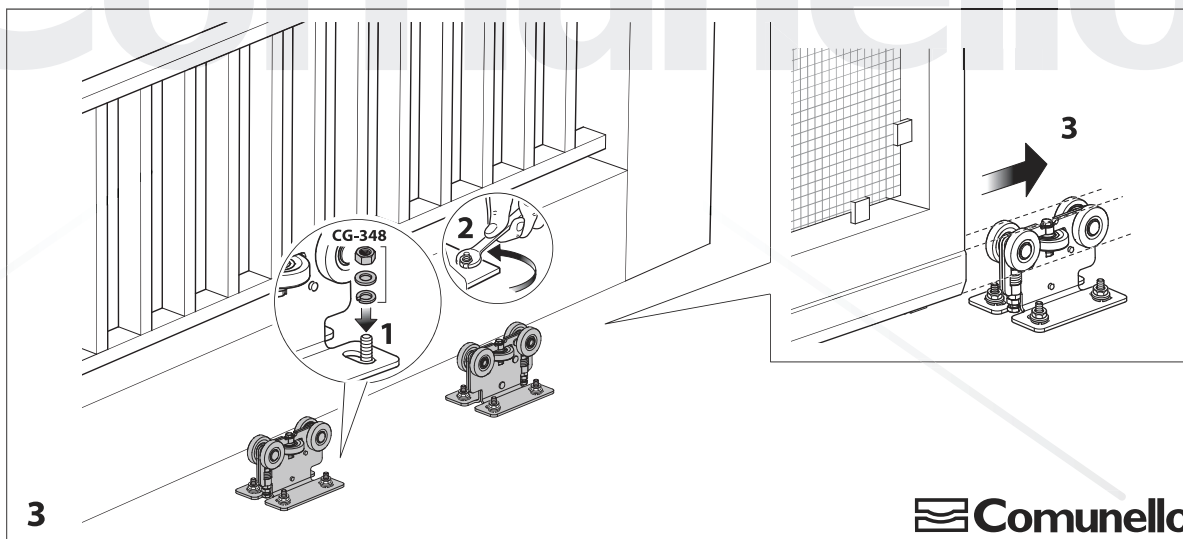
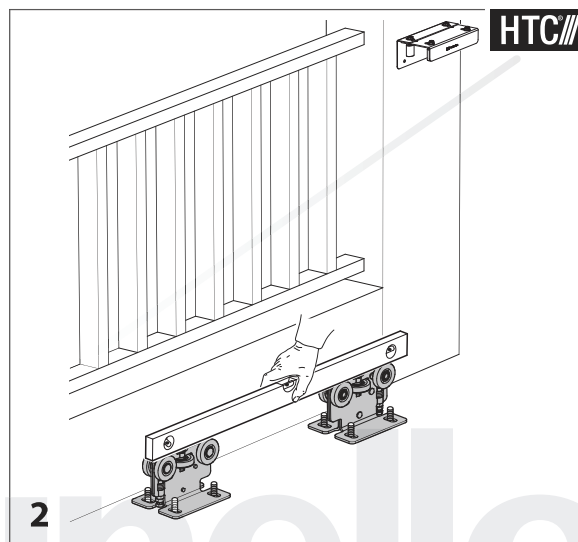
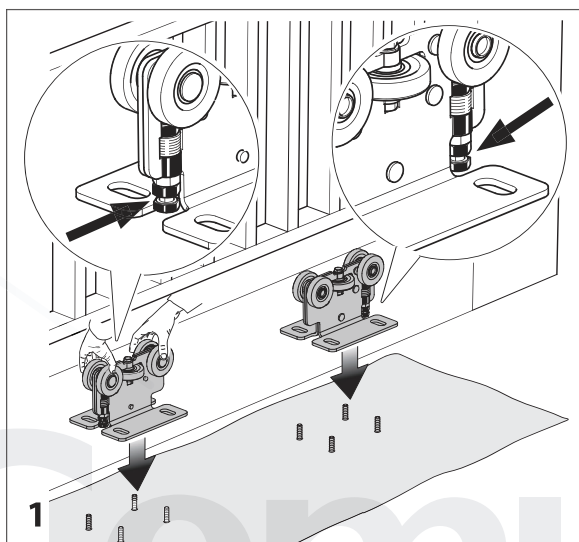
GATE OPENING WIDTH (L)

TOTAL LENGTH (LT)



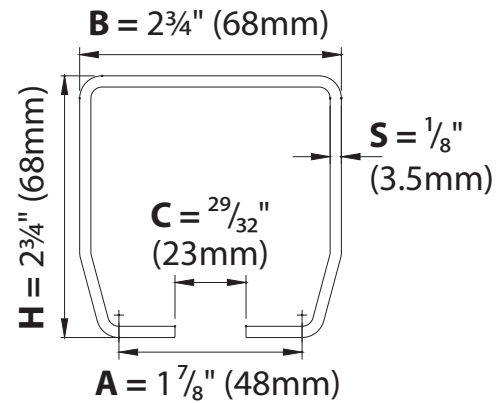
CGS-KIT150

	L = 6'6" (2m)			L = 8' (2.5m)			L = 10' (3m)			L = 11'6" (3.5m)			L = 13' (4m)		
Weight (lb)	FA (in)	I (in)	LT (in)	FA (in)	I (in)	LT (in)	FA (in)	I (in)	LT (in)	FA (in)	I (in)	LT (in)	FA (in)	I (in)	LT (in)
200	36	12	124	38	14	143	39	16	169	41	18	190	41	18	207
220	36	12	124	39	16	145	39	16	169	41	18	190	43	20	209
275	39	16	128	39	16	145	43	20	173	45	22	194	49	26	215
330	39	16	128	43	20	149	47	24	177	49	26	198	53	30	219
400	43	20	132	47	24	153	51	28	181	57	34	206	61	38	227
440	47	24	136	51	28	157	55	32	185	61	38	210			
550	55	32	144	59	36	165	66	44	197						
660	63	40	152	75	52	181									



CGS-245M

Small Galvanized Track



USE: Monorail for self-supporting gates.
 TYPE Monorail for carriages in steel.
 FIXING: For welding under the lower upright of gate.
 MATERIAL: Steel.
 RECYCLING: Disposal as ferrous material in accordance with the current laws in the country of installation.
 PARTS SUBJECT TO WEAR: Surfaces of contact between rail and carriage wheels.
 IMPORTANT: The manufacturer reserves the right to modify the characteristics of the product as required without notice. The manufacturer declines any liability for even partial modifications to the product, and the declared performance values are valid only if the installation procedures are carried out by qualified personnel.

TECHNICAL CHARACTERISTICS				
	CGS-345M	CGS-345P	CGS-345G	
WEIGHT PER METRE	6,08 Kg/m	11,66 Kg/m	22,33 Kg/m	
COMBINED CARRIAGES	CGS-350.5M	CGS-350.5P	CGS-350.5G	
	CGS-350.8M	CGS-350.8P	CGS-350.8G	
	CGS-250.5M	CGS-250.5P	CGS-250.5G	
	CGS-250.8M	CGS-250.8P	CGS-250.8G	
	CGS-150.5M	CGS-150.5P	CGS-150.5G	
	CGS-245M	CGS-245P	CGS-245G	
WEIGHT PER METRE	6,08 Kg/m	11,66 Kg/m	22,33 Kg/m	
COMBINED CARRIAGES	CGS-150.5M	CGS-150.5P	CGS-150.5G	
MAINTENANCE FREQUENCY				
PRIVATE HOME	BUSINESS	WAREHOUSE	CONDOMINIUM <20 UNITS	CONDOMINIUM > 20 UNITS
2 YEAR*	2 YEAR *	2 YEAR *	1 YEAR *	1 YEAR *
Clean inside lower edges of monorail				
Check for any deformation on body. Check welds.				
*The scheme refers to a normal workplace (not marine or particularly aggressive environments)				

CGS-245M track for use with CGS-150.5M & CGS-250.8M Carriages

MODEL TRACK	A		B		C		H		S	
	BOTTOM ID		TOP WIDTH		OPENING SLOT		HEIGHT		THICKNESS	
	Inch	mm	Inch	mm	Inch	mm	Inch	mm	Inch	mm
CGS-245M	1 7/8	48	2 3/4	68	29/32	23	2 3/4	68	1/8	3.5

Galvanized steel track lengths available in 2M, 3M and 6M

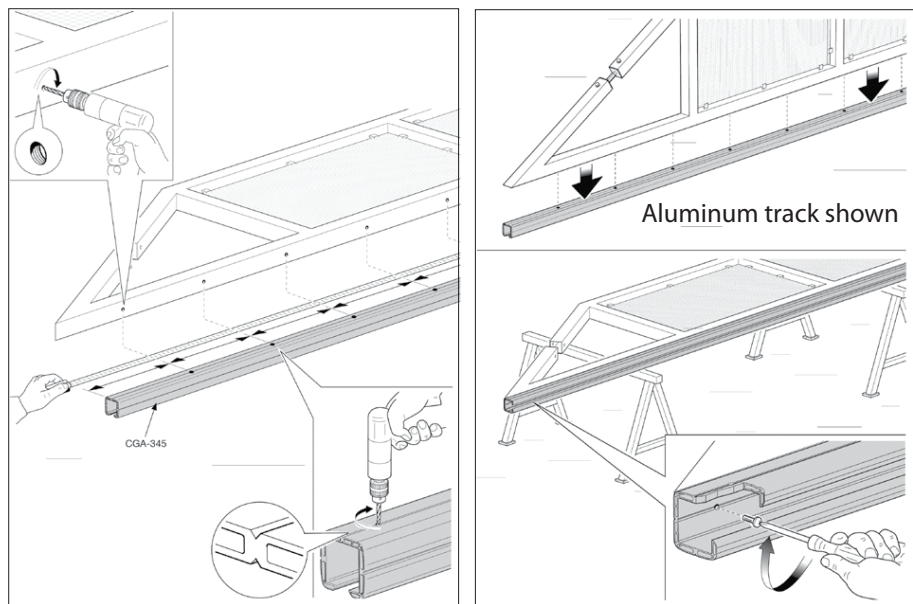
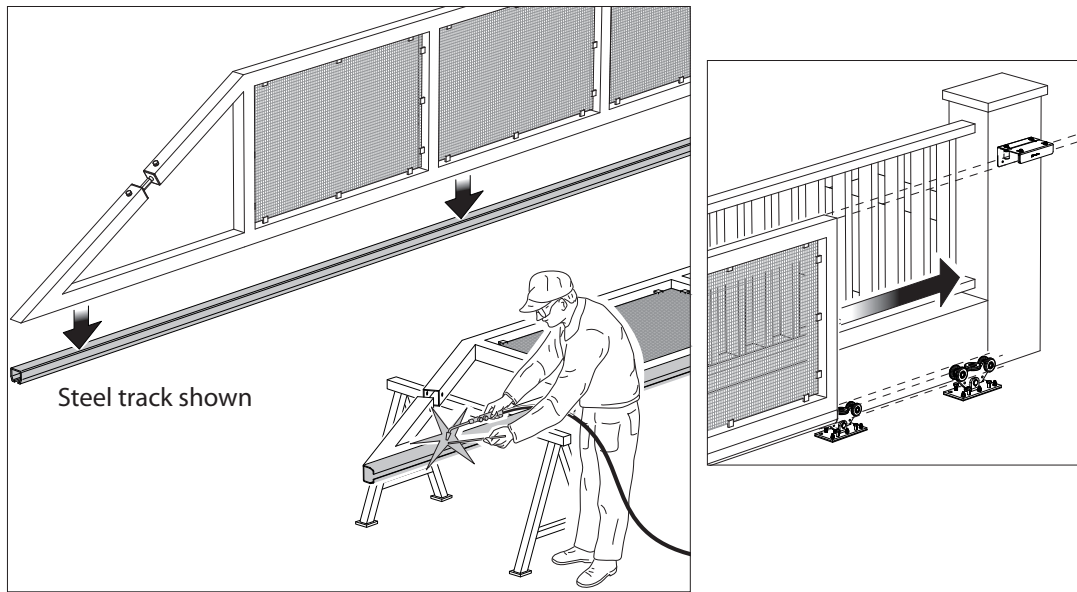
Illustrations not to scale and are for reference only. Imperial units shown are for reference only, use millimeters for most accurate sizes.

All pictures, technical drawings and related specifications belong to Fratelli Comunello Spa and they are defended by rules of copyright.
 All uses not expressly authorized will be legally prosecuted. Product specifications are subject to change without notice.

The track can be attached to the gate by welding or mechanically fastening.

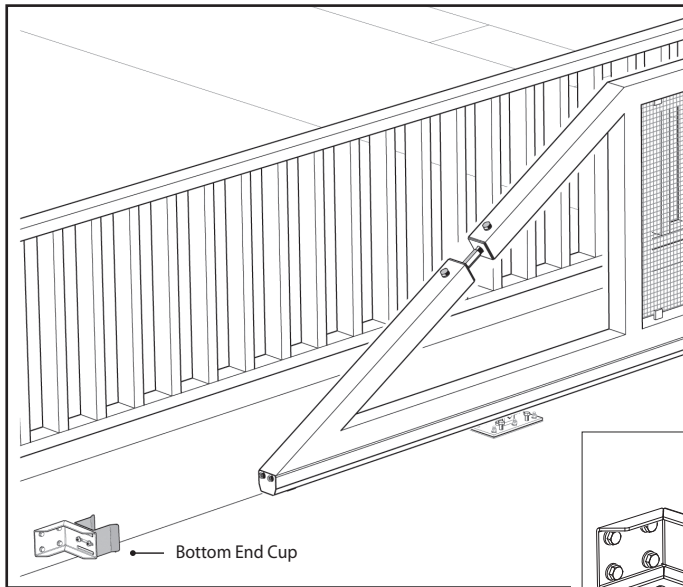
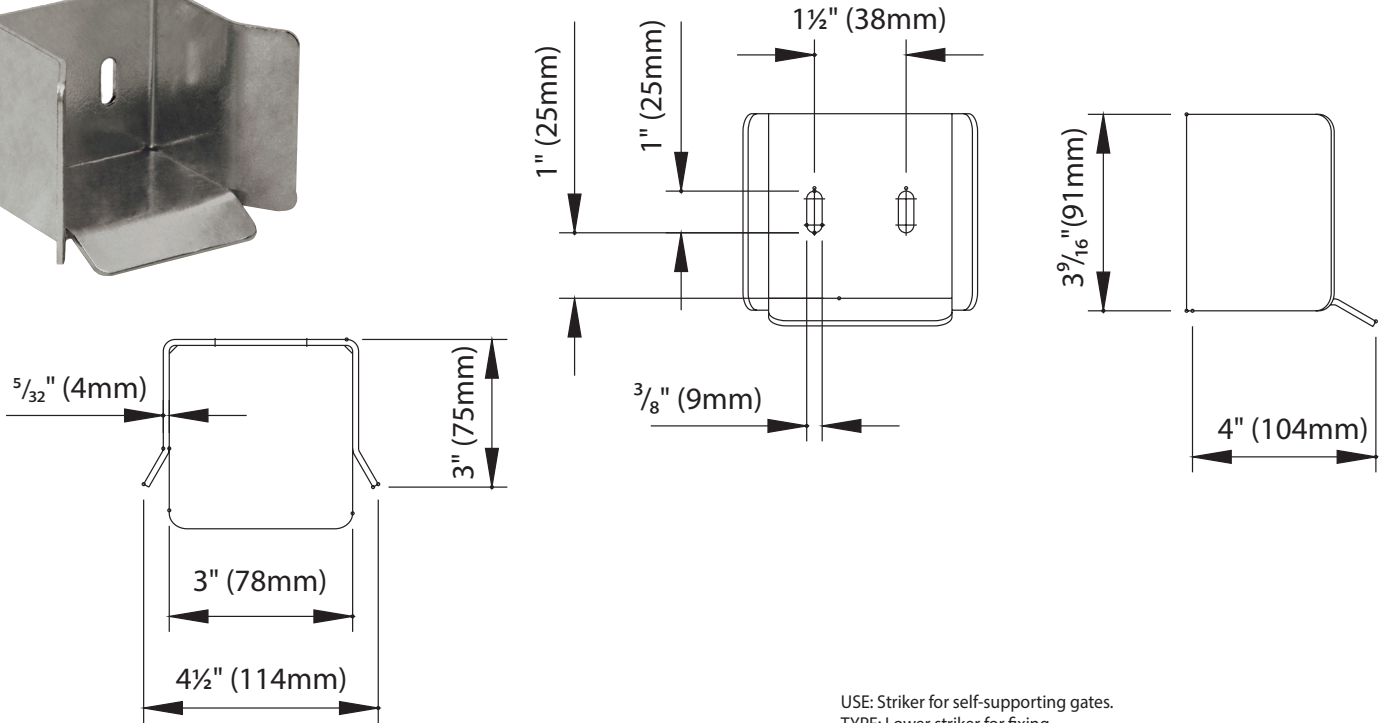
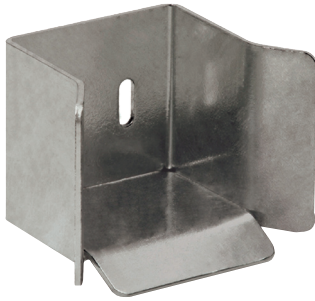
You can attach the wood frame to the galv. steel track in a few different ways:

- 1) Bolt/screw on the gate frame - drill up and thru the top of the cantilever track and bolt the frame to the track. Caution - use counter sinking bolts/screws so that nothing protrudes into the track cavity or carriage wheels will get stuck and the gate will not slide.
- 2) Weld small steel tabs (2" x 3" or similar size) with bolt holes along both edges of the track (like alligator skin). Bolt thru these into the gate frame.
- 3) Bolt a length of steel flat bar (or 2x steel L-angle iron) along the bottom length of the gate frame, then weld this flat bar to the top of the cantilever track. For added bond, use epoxy along the length of the flat bar.



CGS-346M

Bottom End Cup, Galvanized



USE: Striker for self-supporting gates.

TYPE: Lower striker for fixing.

FIXING: For fixing on post or for fixing on special bracket CG-15.

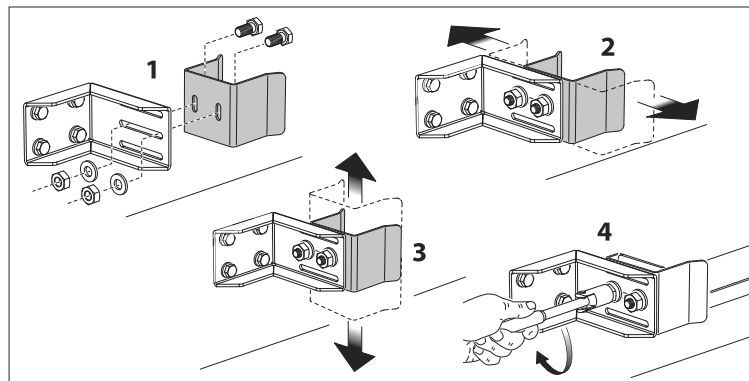
MATERIAL: Electrogalvanized steel.

RECYCLING: Disposal as ferrous material in accordance with the current laws in the country of installation.

IMPORTANT: The manufacturer reserves the right to modify the characteristics of the product as required without notice. The manufacturer declines any liability for even partial modifications to the product, and the declared performance values are valid only if the installation procedures are carried out by qualified personnel.

MAINTENANCE FREQUENCY: This article does not require any type of maintenance. Check its functionality and replace the product if necessary.

TECHNICAL CHARACTERISTICS				
	CGS-346M	CGS-346P	CGS-346G	CGS-346XL
WEIGHT OF PART	1,15 Kg	1,80 Kg	3,80 Kg	4,80 Kg
ASSOCIATED ANGLE BRACKET	CG-15M	CG-15P	CG-15G	-



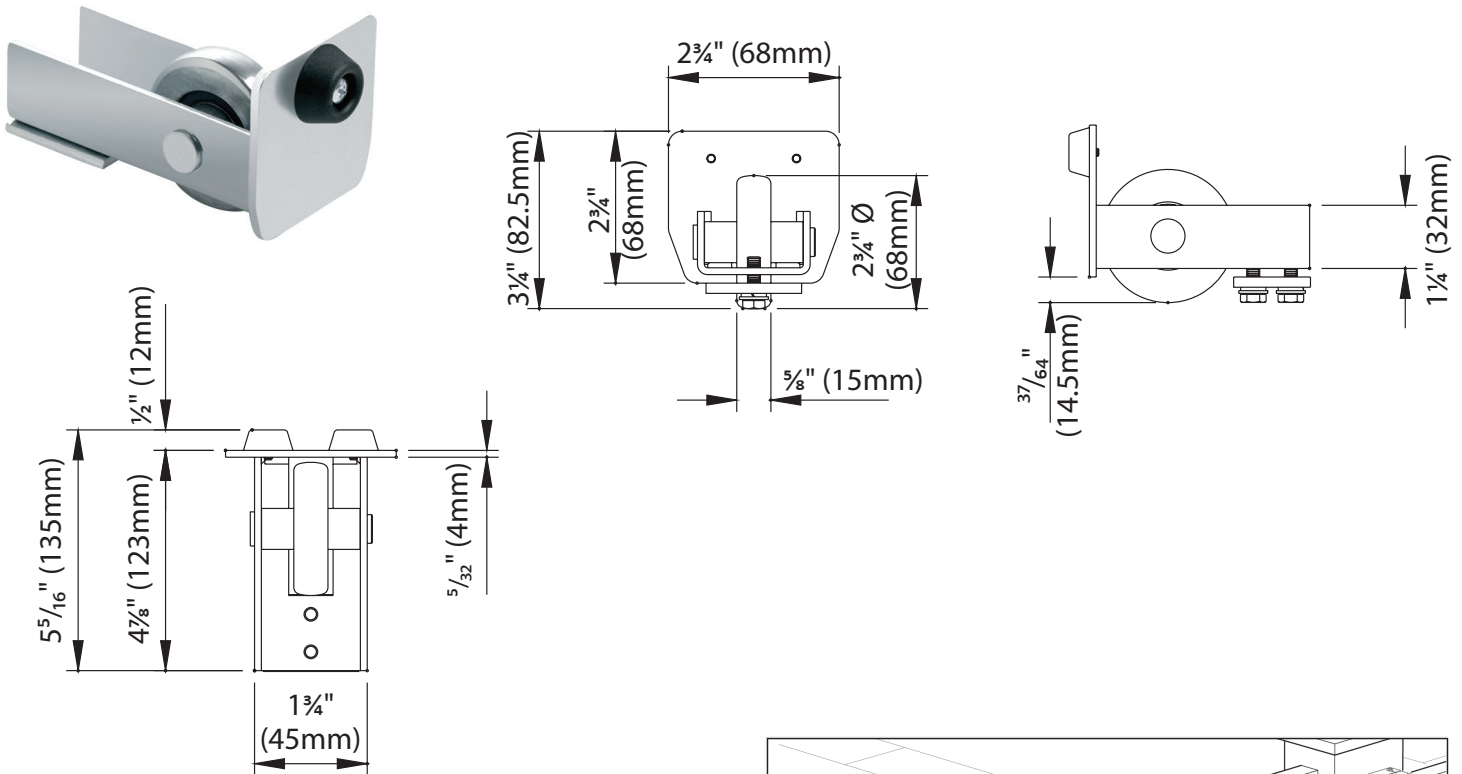
Illustrations not to scale and are for reference only. Imperial units shown are for reference only, use millimeters for most accurate sizes.

All pictures, technical drawings and related specifications belong to Fratelli Comunello Spa and they are defended by rules of copyright.

All uses not expressly authorized will be legally prosecuted. Product specifications are subject to change without notice.

CGS-347M

End Wheel for Track, Galvanized



USE: Terminal with wheel for monorail.

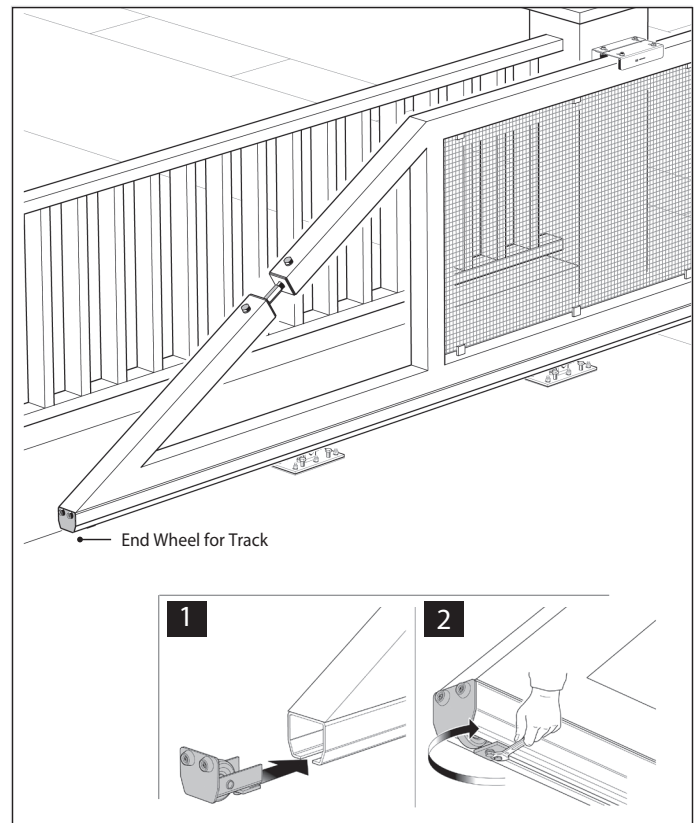
FIXING: Tighten the fixing plate below the edges of the monorail.

RECYCLING: Disposal as ferrous material in accordance with the current laws in the country of installation.

IMPORTANT: The manufacturer reserves the right to modify the characteristics of the product as required without notice. The manufacturer declines any liability for even partial modifications to the product, and the declared performance values are valid only if the installation procedures are carried out by qualified personnel.

MAINTENANCE FREQUENCY: This article does not require any type of maintenance. In case of product replacement, check its functionality.

TECHNICAL CHARACTERISTICS				
	CGS-347M	CGS-347P	CGS-347G	CGI-347P
WEIGHT OF PART	1,00 Kg	1,70 Kg	4,15 Kg	1,70 Kg
MATERIAL	Galvanised steel	Galvanised steel	Galvanised steel	Stainless steel
COMBINED MONORAIL	CGS-345M	CGS-345P	CGS-345G	CGI-345P
	CGS-245M	CGS-245P	CGS-245G	
COMBINED STRIKER PLATE	CGS-346M	CGS-346P	CGS-346G	CGI-346P



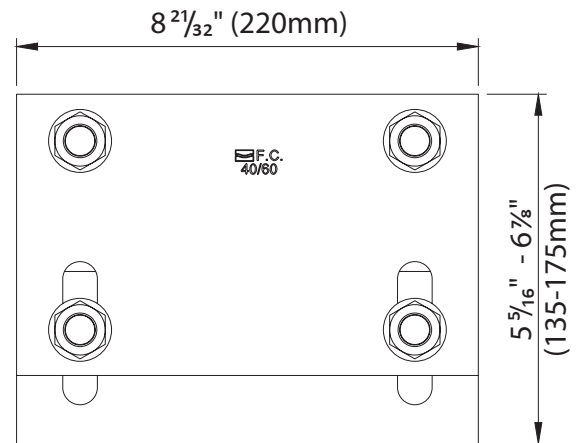
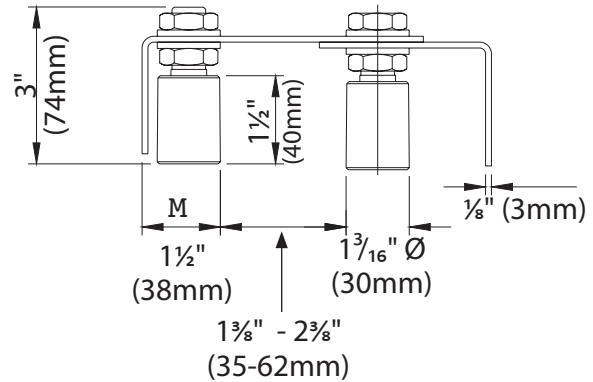
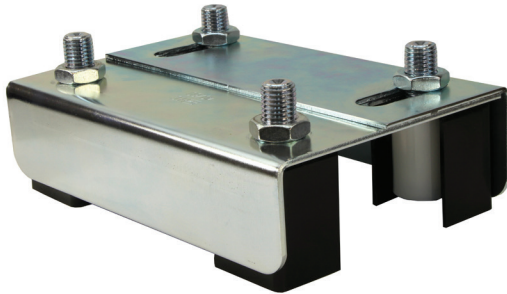
Illustrations not to scale and are for reference only. Imperial units shown are for reference only, use millimeters for most accurate sizes.

All pictures, technical drawings and related specifications belong to Fratelli Comunello Spa and they are defended by rules of copyright.

All uses not expressly authorized will be legally prosecuted. Product specifications are subject to change without notice.

255-220-C

Adjustable Upper Guide
with Roller Covers,
For up to 2 3/8" frames, Galvanized



USE: Guide plate for sliding gates.

TYPE: Gate guide plate with double adjustment.

FIXING: For welding.

MATERIAL: Body in electrogalvanised steel and rollers in nylon.

RECYCLING: Dispose of the body as ferrous material and the rollers as plastic material in accordance with the current laws in the country of installation.

PARTS SUBJECT TO WEAR: Rollers.

IMPORTANT: The manufacturer reserves the right to modify the characteristics of the product as required without notice. The manufacturer declines any liability for even partial modifications to the product, and the declared performance values are valid only if the installation procedures are carried out by qualified personnel. The roller does not have a load-bearing function, in only having to guide the sash vertically during its sliding movement. It must only be able to withstand minor impacts or sudden unbalancing (wind gusts, light impacts).

TECHNICAL CHARACTERISTICS				
	255-220		255-350	
WEIGHT OF PART	2,27 Kg		5,58 Kg	
GATE MIN. THICKNESS	35 mm		62 mm	
GATE MAX. THICKNESS	62 mm		85 mm	
MAINTENANCE FREQUENCY				
PRIVATE HOME	COMPANY	WAREHOUSE	CONDOMINIUM <20 UNITS	CONDOMINIUM > 20 UNITS
2 YEARS*	2 YEARS*	2 YEARS*	1 YEAR*	1 YEAR*
Check rollers.				
Check welds.				
*The scheme refers to a normal workplace (not marine or particularly aggressive environments).				

Illustrations not to scale and are for reference only. Imperial units shown are for reference only, use millimeters for most accurate sizes.

All pictures, technical drawings and related specifications belong to Fratelli Comunello Spa and they are defended by rules of copyright.
All uses not expressly authorized will be legally prosecuted. Product specifications are subject to change without notice.

255-220-C, 256-220 or 256-300

