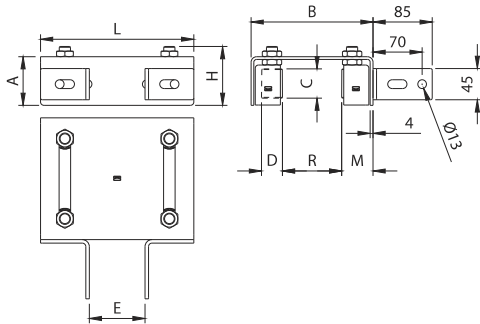
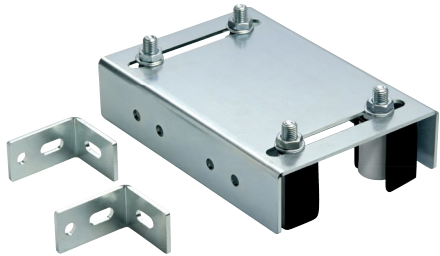


Art. 251



Art.		Code	A	B	C	D	E	H	L	M	R		Kg
251-220	Ø30	11305805 001	70	175	40	Ø30	80-120	85	220	45	0-80	4	10,80
251-300	Ø40	11305810 001	80	230	58	Ø40	80-120	102	300	52	0-120	2	7,50

EN

USE: Guide plate for sliding gates.

TYPE: Adjustable gate guide plate with angle brackets.

FIXING: For fixing with special angle brackets.

MATERIAL: Body in electrogalvanised steel and rollers in nylon.

RECYCLING: Dispose of the body as ferrous material and the rollers as plastic material in accordance with the current laws in the country of installation.

PARTS SUBJECT TO WEAR: Rollers.

IMPORTANT: The manufacturer reserves the right to modify the characteristics of the product as required without notice. The manufacturer declines any liability for even partial modifications to the product, and the declared performance values are valid only if the installation procedures are carried out by qualified personnel. The roller does not have a load-bearing function, in only having to guide the sash vertically during its sliding movement. It must only be able to withstand minor impacts or sudden unbalancin

TECHNICAL CHARACTERISTICS				
	251-220		251-300	
WEIGHT OF PART	2,70 Kg		3,75 Kg	
GATE MIN. THICKNESS	20 mm		20 mm	
GATE MAX. THICKNESS	80 mm		120 mm	
MAINTENANCE FREQUENCY				
PRIVATE HOME	COMPANY	WAREHOUSE	CONDOMINIUM <20 UNITS	CONDOMINIUM > 20 UNITS
2 YEARS*	2 YEARS*	2 YEARS*	1 YEAR*	1 YEAR*
Check rollers.				
Check fixing of brackets.				
*The scheme refers to a normal workplace (not marine or particularly aggressive environments).				

